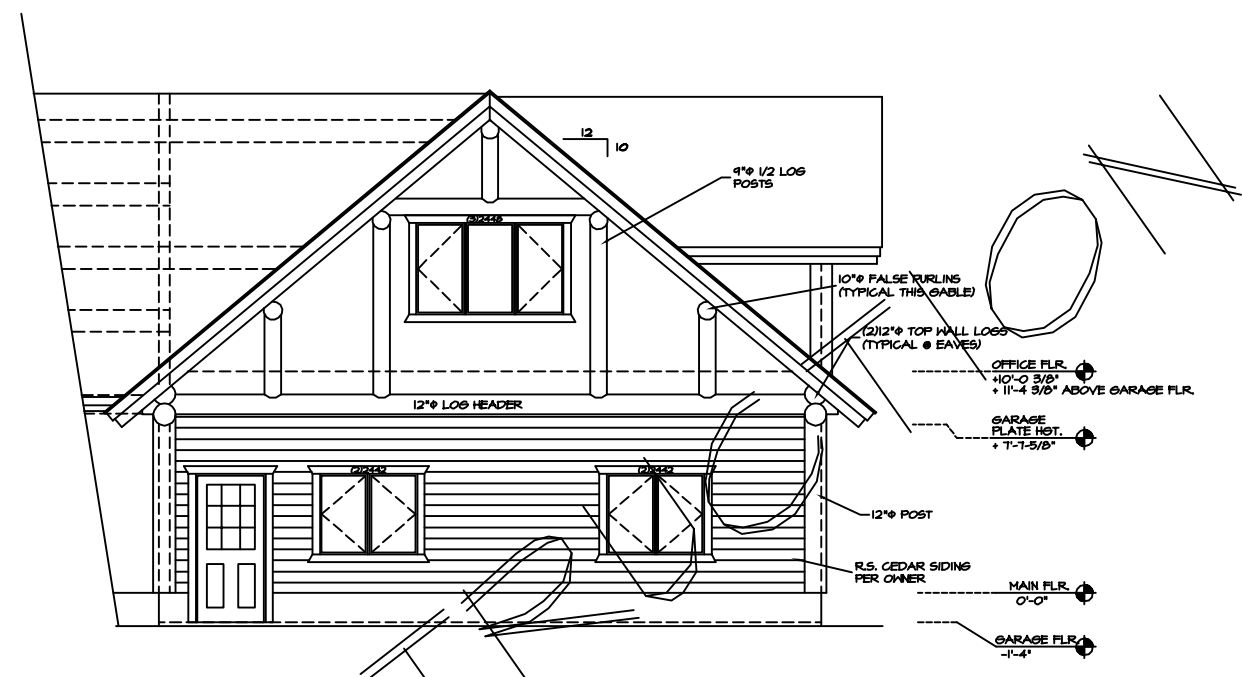
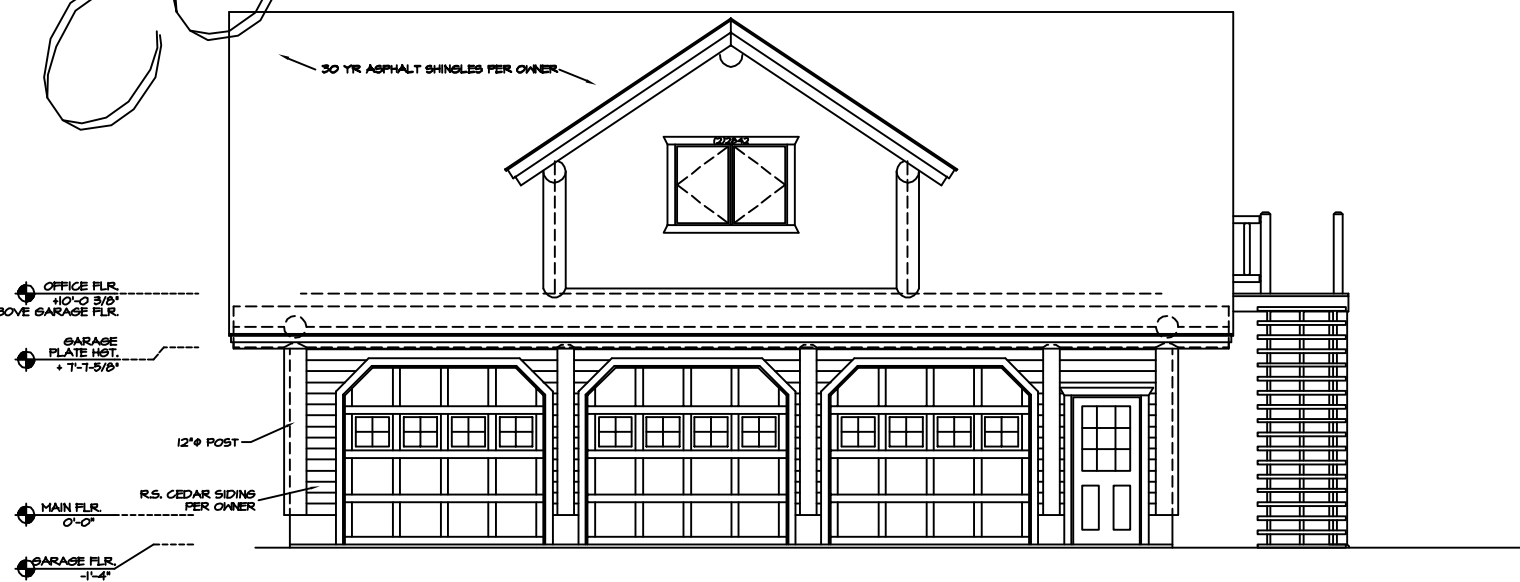


OFFICE FLOOR PLAN
SCALE: 3/16" = 1'-0"

NOTE:
EVERY EFFORT HAS BEEN MADE TO ASSURE THE ACCURACY OF DIMENSIONS AND DETAILS, HOWEVER, IT IS THE RESPONSIBILITY OF THE BUILDER TO VERIFY ALL MEASUREMENTS.



DORMER OPTION
GARAGE GABLE ELEVATION
SCALE: 3/16" = 1'-0"



DORMER OPTION
GARAGE FRONT ELEVATION
SCALE: 3/16" = 1'-0"

SQUARE FOOTAGE:	
MAIN FLOOR:	3013 SQ. FT.
LOFT FLOOR:	1644 SQ. FT.
BASEMENT FLOOR:	3013 SQ. FT.
TOTAL:	3013 SQ. FT.